

# GENTLE STONE

 **ASCOT**  
EVERYTILE

White • Ivory • Mink • Mud • Black







 **ASCOT**  
EVERYTILE

# Indice

---

## INDEX



### Green Kitchen

Pag.  
7



### Relax Area

Pag.  
19



### Living Room

Pag.  
11



### Hotel Lounge

Pag.  
21

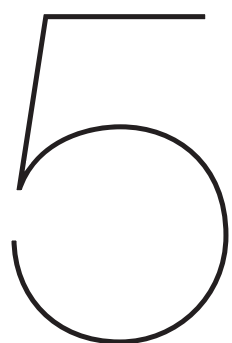


### Bathroom + Out

Pag.  
15

# In evidenza

## HIGHLIGHTS



### Colori



White



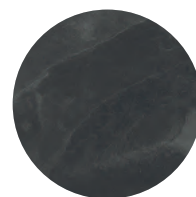
Ivory



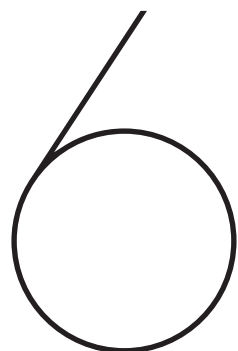
Mink



Mud



Black



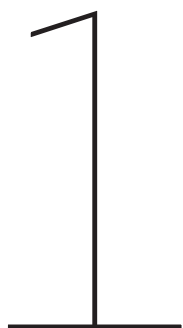
### Formati per Interno

9,7X59,5 • 29,6X59,5  
30X60 • 59,5X59,5  
60X60 • 59,5X119,2



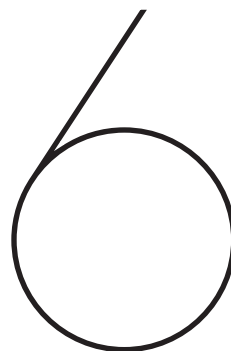
### Formati per Esterno

30X60  
60X60



### Spessore

10mm



### Pezzi Speciali

3 Mosaici  
2 Battiscopa  
1 Scalino





Ivory Rett. 59,5x59,5- 23,4"x23,4"

Gentle Stone

Ivory

An elegant and austere slate. Stone slabs with different patterning and a range of neutral and natural colours create a mood of calm and good taste.

Die Eleganz und Schlichtheit des Steins. Grafisch unterschiedliche Schieferplatten und eine Farbpalette an neutralen und natürlichen Farben schaffen eine Atmosphäre der Ruhe und des ästhetischen Gleichgewichts.

La elegancia y la sobriedad de la pizarra. Losas de piedra únicas y una paleta de colores neutros crean una atmósfera de calma y equilibrio estético.

L'eleganza e la sobrietà della pietra lavagna. Lastre di pietra uniche ed una palette di colori neutri e naturali creano un'atmosfera di quiete ed equilibrio estetico.

L'élégance et la sobriété de l'ardoise. Des dalles de pierre graphiquement différentes et une palette de couleurs neutres et naturelles qui créent une atmosphère de paix et d'équilibre esthétique.

Элегантность и сдержанность сланцевого камня. Уникальные каменные плиты и нейтральная цветовая палитра создают атмосферу спокойствия и эстетического баланса.

Green Kitchen





Ivory Rett. 9,7x59,5 - 3,8"x23,4"  
Ivory Rett. 59,5x59,5 - 23,4"x23,4"

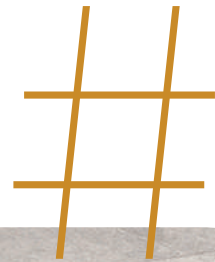


# Backsplash



Ivory Rett. 9,7x59,5 - 3,8"x23,4"





White Rett. 59,5x59,5 - 23,4"x23,4"

Gentle Stone

**White**

**Living Room**









# White

Reti. 59,5x119,2 - 23,4"x46,8"



Mud Rett. 9,7x59,5 - 3,8"x23,4"  
White Rett. 59,5x119,2 - 23,4"x46,8"

9,7  
59,5



Gentle Stone

Mud



Mud Out Rett. 60x60 - 24"x24"

Bathroom + Out









Mud Rett. 9,7x59,5 - 3,8"x23,4"  
Mud Rett. 29,6x59,5 - 11,8"x23,4"  
Mud Rett. 59,5x119,2 - 23,4"x46,8"  
Mud Mosaic Lisca 31x29 - 12,2"x11,4"

---



Mud Rett. 9,7x59,5 - 3,8"x23,4"



Mink Rett. 59,5x119,2 - 23,4"x46,8"



# Mink

®

La purezza del design,  
l'eleganza del colore.



The purity of the design, the elegance  
of the colour.

La pureté du design, l'élégance de la  
couleur.

Die Reinheit des Designs, die Eleganz  
der Farbe.

La pureza del diseño, la elegancia del  
color.

Чистота дизайна, изысканность цветов.

# Relax Area



Black Rett.  
59,5x119,2 - 23,4"x46,8"





Gentle Stone

# Black

59,5  
119,2



Black Rett. 59,5x119,2 - 23,4"x46,8"

# Hotel Lounge



Ivory Esagona Mix 35x37,5 - 13,8"x14,8"  
Mink Rett. 60x60 - 24"x24"

Gentle Stone

# Decorations



White Mosaic Lisca 31x29 - 12,2"x11,4"  
White Rett. 30x60 - 12"x24"  
White Rett. 60x60 - 24"x24"







# GENTLE STONE

DATI TECNICI



## PORCELLANATO IMPASTO COLORATO

COLOURED BODY PORCELAIN  
STONEWARE

DURCHGEFÄRBTES  
FEINSTEINZEUG

GRÈS CÉRAME COLORÉ DANS  
LA MASSE

PORCELÁNICO DE PASTA DE  
COLOR

КЕРАМОГРАНИТ,  
ОКРАШЕННЫЙ В МАССЕ

## DIGITAL TECHNOLOGY



IN



WALL



FLOOR



OUT  
10mm

## COLORI

COLOURS - COULEURS - FARBEN - COLORES - ЦВЕТА

## FINITURE/FINISHES

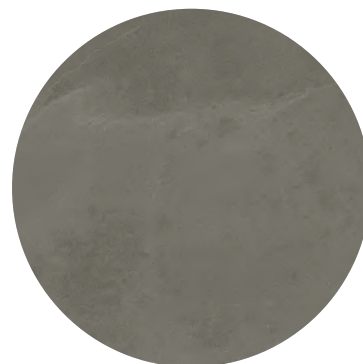
RETT. / NAT.



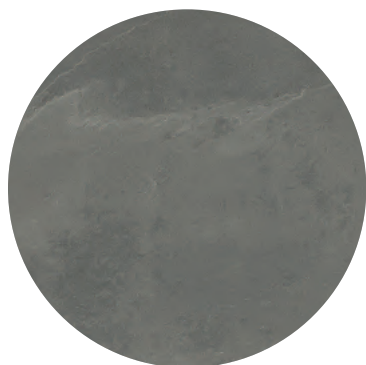
**WHITE**



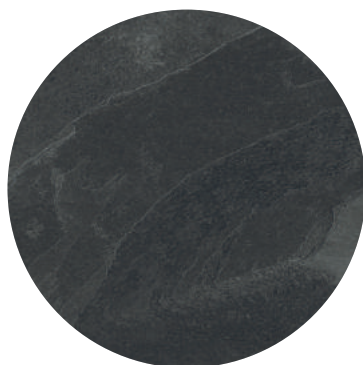
**IVORY**



**MINK**



**MUD**



**BLACK**

# GENTLE STONE

SVILUPPO GRAFICO / GRAPHIC DEVELOPMENT

Mud Rett. 59,5x119,2 - 23,4"x46,8"



# FORMATI

SIZES - FORMATS - FORMATE - FORMATOS - ФОРМАТЫ



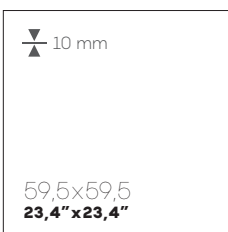
9,7x59,5  
3,8" x 23,4"  
RETT.



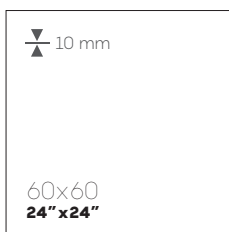
29,6x59,5  
11,8" x 23,4"  
RETT.



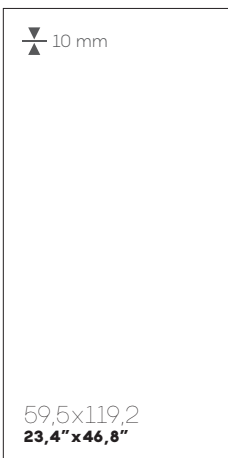
30x60  
12" x 24"  
NAT.



59,5x59,5  
23,4" x 23,4"  
RETT.

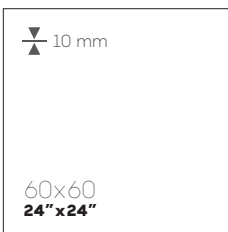


60x60  
24" x 24"  
NAT.



59,5x119,2  
23,4" x 46,8"  
RETT.

RETT.



60x60  
24" x 24"  
Ivory / Mud

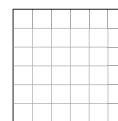
Ivory / Mud



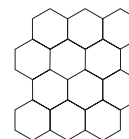
30x60  
12" x 24"  
Ivory / White

Ivory / White

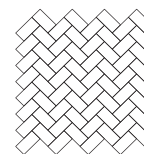
## DECORATIONS AND SPECIAL PIECES



Mosaic  
29,5x29,5 11,5" x 11,5"



Mosaic Esagona Mix  
35x37,5 13,8" x 14,8"



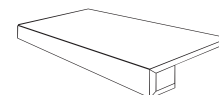
Mosaic Lisca  
31x29 12,2" x 11,4"



Battiscopa  
9x59,5 3,5" x 23,4"  
RETT.

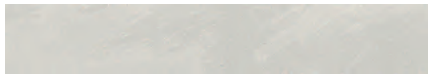


Battiscopa  
9x60 3,5" x 24"



Scalino Costa Retta  
33x120 13" x 48"  
RETT.

**FORMATI E DECORI / FORMATS AND DECORATIONS**



9,7x59,5 **3,8" x 23,4"**



29,6x59,5 **11,8" x 23,4"** / 30x60 **12" x 24"**



59,5x59,5 **23,4" x 23,4"** / 60x60 **24" x 24"**



59,5x119,2 **23,4" x 46,8"**



Mosaic  
29,5x29,5 **11,5" x 11,5"**



Mosaic Lisca  
31x29 **12,2" x 11,4"**

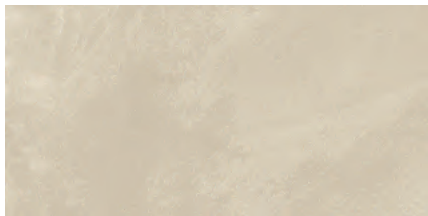


Mosaic Esagona Mix  
35x37,5 **13,8" x 14,8"**

**WHITE**



9,7x59,5 **3,8" x 23,4"**



29,6x59,5 **11,8" x 23,4"** / 30x60 **12" x 24"**



59,5x59,5 **23,4" x 23,4"** / 60x60 **24" x 24"**



59,5x119,2 **23,4" x 46,8"**



Mosaic  
29,5x29,5 **11,5" x 11,5"**



Mosaic Lisca  
31x29 **12,2" x 11,4"**



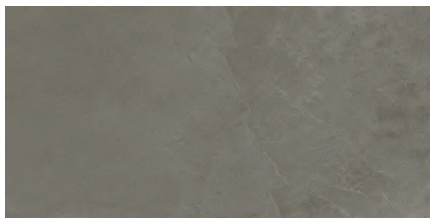
Mosaic Esagona Mix  
35x37,5 **13,8" x 14,8"**

**IVORY**

**FORMATI E DECORI / FORMATS AND DECORATIONS**



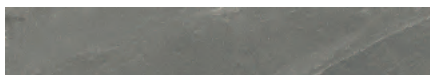
9,7x59,5 3,8"x23,4"



29,6x59,5 11,8"x23,4" / 30x60 12"x24"



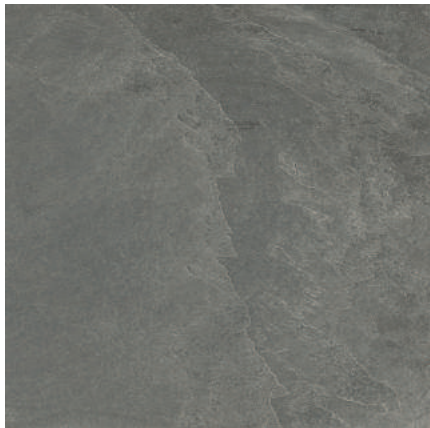
59,5x59,5 23,4"x23,4" / 60x60 24"x24"



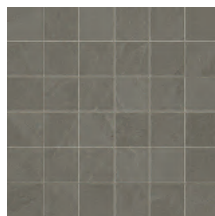
9,7x59,5 3,8"x23,4"



29,6x59,5 11,8"x23,4" / 30x60 12"x24"



59,5x59,5 23,4"x23,4" / 60x60 24"x24"



Mosaic  
29,5x29,5 11,5"x11,5"



Mosaic Lisca  
31x29 12,2"x11,4"

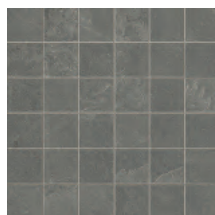


Mosaic Esagona Mix  
35x37,5 13,8"x14,8"



59,5x119,2 23,4"x46,8"

**MINK**



Mosaic  
29,5x29,5 11,5"x11,5"



Mosaic Lisca  
31x29 12,2"x11,4"



Mosaic Esagona Mix  
35x37,5 13,8"x14,8"



59,5x119,2 23,4"x46,8"

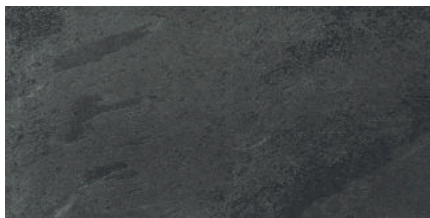
**MUD**



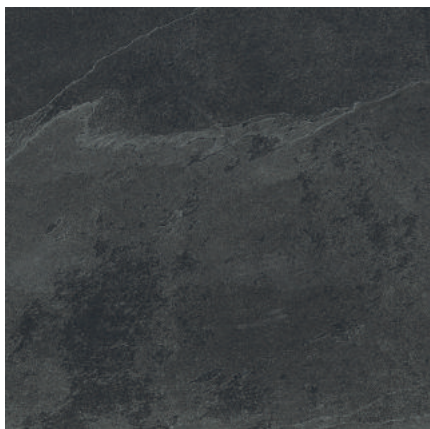
**FORMATI E DECORI / FORMATS AND DECORATIONS**



9,7x59,5 **3,8" x 23,4"**



29,6x59,5 **11,8" x 23,4"** / 30x60 **12" x 24"**



59,5x59,5 **23,4" x 23,4"** / 60x60 **24" x 24"**



Mosaic  
29,5x29,5 **11,5" x 11,5"**



Mosaic Lisca  
31x29 **12,2" x 11,4"**



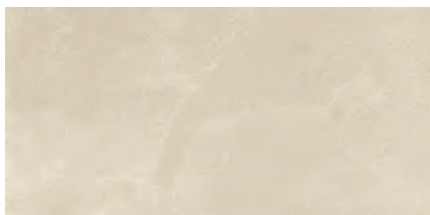
Mosaic Esagona Mix  
35x7,5 **13,8" x 14,8"**



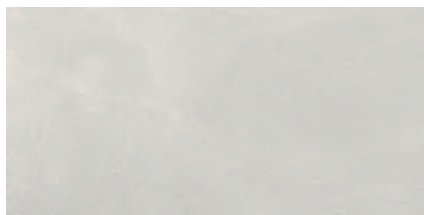
59,5x119,2 **23,4" x 46,8"**

**BLACK**

**OUT**



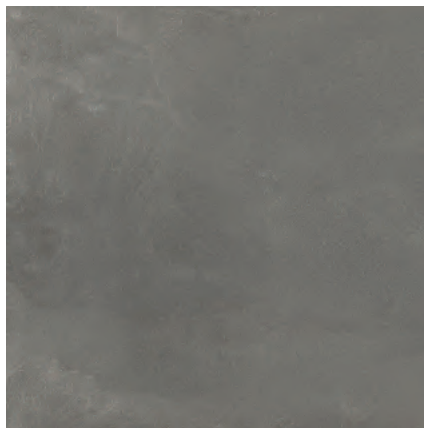
Ivory 30x60 **12" x 24"**



White 30x60 **12" x 24"**



Ivory 60x60 **24" x 24"**



Mud 60x60 **24" x 24"**

# GENTLE STONE

**59,5X119,2** / 23,4"X46,8"

| CODE      | COLOR                    | SIZES      |
|-----------|--------------------------|------------|
| GST12610R | GENTLE STONE WHITE RETT. | 59,5X119,2 |
| GST12620R | GENTLE STONE IVORY RETT. | 59,5X119,2 |
| GST12660R | GENTLE STONE MINK RETT.  | 59,5X119,2 |
| GST12670R | GENTLE STONE BLACK RETT. | 59,5X119,2 |
| GST12690R | GENTLE STONE MUD RETT.   | 59,5X119,2 |

**60X60** / 24"X24"

|        |                    |       |
|--------|--------------------|-------|
| GST610 | GENTLE STONE WHITE | 60X60 |
| GST620 | GENTLE STONE IVORY | 60X60 |
| GST660 | GENTLE STONE MINK  | 60X60 |
| GST670 | GENTLE STONE BLACK | 60X60 |
| GST690 | GENTLE STONE MUD   | 60X60 |

**59,5X59,5** / 23,4"X23,4"

|         |                          |           |
|---------|--------------------------|-----------|
| GST610R | GENTLE STONE WHITE RETT. | 59,5X59,5 |
| GST620R | GENTLE STONE IVORY RETT. | 59,5X59,5 |
| GST660R | GENTLE STONE MINK RETT.  | 59,5X59,5 |
| GST670R | GENTLE STONE BLACK RETT. | 59,5X59,5 |
| GST690R | GENTLE STONE MUD RETT.   | 59,5X59,5 |

**30X60** / 12"X24"

|        |                    |       |
|--------|--------------------|-------|
| GST310 | GENTLE STONE WHITE | 30X60 |
| GST320 | GENTLE STONE IVORY | 30X60 |
| GST360 | GENTLE STONE MINK  | 30X60 |
| GST370 | GENTLE STONE BLACK | 30X60 |
| GST390 | GENTLE STONE MUD   | 30X60 |

**29,6X59,5** / 11,8"X23,4"

|         |                          |           |
|---------|--------------------------|-----------|
| GST310R | GENTLE STONE WHITE RETT. | 29,6X59,5 |
| GST320R | GENTLE STONE IVORY RETT. | 29,6X59,5 |
| GST360R | GENTLE STONE MINK RETT.  | 29,6X59,5 |
| GST370R | GENTLE STONE BLACK RETT. | 29,6X59,5 |
| GST390R | GENTLE STONE MUD RETT.   | 29,6X59,5 |

**9,7X59,5** / 3,8"X23,4"

|          |                          |          |
|----------|--------------------------|----------|
| GST1061R | GENTLE STONE WHITE RETT. | 9,7X59,5 |
| GST1062R | GENTLE STONE IVORY RETT. | 9,7X59,5 |
| GST1066R | GENTLE STONE MINK RETT.  | 9,7X59,5 |
| GST1067R | GENTLE STONE BLACK RETT. | 9,7X59,5 |
| GST1069R | GENTLE STONE MUD RETT.   | 9,7X59,5 |

**MOSAIC ESAGONA MIX**  
**35X37,5** / 13,8"X14,8"

|         |                                       |         |
|---------|---------------------------------------|---------|
| GSTEM10 | GENTLE STONE WHITE ESAGONA MIX (T 12) | 35X37,5 |
| GSTEM20 | GENTLE STONE IVORY ESAGONA MIX (T 12) | 35X37,5 |
| GSTEM60 | GENTLE STONE MINK ESAGONA MIX (T 12)  | 35X37,5 |
| GSTEM70 | GENTLE STONE BLACK ESAGONA MIX (T 12) | 35X37,5 |
| GSTEM90 | GENTLE STONE MUD ESAGONA MIX (T 12)   | 35X37,5 |

**MOSAIC LISCA**  
**31X29** / 12,2"X11,4"

|         |                                 |       |
|---------|---------------------------------|-------|
| GSTLM10 | GENTLE STONE WHITE MOSAIC LISCA | 31X29 |
| GSTLM20 | GENTLE STONE IVORY MOSAIC LISCA | 31X29 |
| GSTLM60 | GENTLE STONE MINK MOSAIC LISCA  | 31X29 |
| GSTLM70 | GENTLE STONE BLACK MOSAIC LISCA | 31X29 |
| GSTLM90 | GENTLE STONE MUD MOSAIC LISCA   | 31X29 |

**MOSAIC**  
29,5X29,5 / 11,5"X11,5"

**BATTISCOPIA**  
9X60 / 3,5"X24"

**BATTISCOPIA**  
9X59,5 / 3,5"X23,4"

**COSTA RETTA**  
33X120 / 13"X47"

60X60 / 24"X24"

30X60 / 12"X24"

|        |                                   |           |
|--------|-----------------------------------|-----------|
| GSTM10 | GENTLE STONE WHITE MOSAICO (T 36) | 29,5X29,5 |
| GSTM20 | GENTLE STONE IVORY MOSAICO (T 36) | 29,5X29,5 |
| GSTM60 | GENTLE STONE MINK MOSAICO (T 36)  | 29,5X29,5 |
| GSTM70 | GENTLE STONE BLACK MOSAICO (T 36) | 29,5X29,5 |
| GSTM90 | GENTLE STONE MUD MOSAICO (T 36)   | 29,5X29,5 |

|        |                          |      |
|--------|--------------------------|------|
| GSTB10 | GENTLE STONE WHITE BATT. | 9X60 |
| GSTB20 | GENTLE STONE IVORY BATT. | 9X60 |
| GSTB60 | GENTLE STONE MINK BATT.  | 9X60 |
| GSTB70 | GENTLE STONE BLACK BATT. | 9X60 |
| GSTB90 | GENTLE STONE MUD BATT.   | 9X60 |

|         |                                |        |
|---------|--------------------------------|--------|
| GSTB10R | GENTLE STONE WHITE BATT. RETT. | 9X59,5 |
| GSTB20R | GENTLE STONE IVORY BATT. RETT. | 9X59,5 |
| GSTB60R | GENTLE STONE MINK BATT. RETT.  | 9X59,5 |
| GSTB70R | GENTLE STONE BLACK BATT. RETT. | 9X59,5 |
| GSTB90R | GENTLE STONE MUD BATT. RETT.   | 9X59,5 |

|          |                                   |        |
|----------|-----------------------------------|--------|
| GSTS331R | GENTLE STONE WHITE C. RETTA RETT. | 33X120 |
| GSTS332R | GENTLE STONE IVORY C. RETTA RETT. | 33X120 |
| GSTS336R | GENTLE STONE MINK C. RETTA RETT.  | 33X120 |
| GSTS337R | GENTLE STONE BLACK C. RETTA RETT. | 33X120 |
| GSTS339R | GENTLE STONE MUD C. RETTA RETT.   | 33X120 |

### OUT 10mm

|         |                        |       |
|---------|------------------------|-------|
| GST6200 | GENTLE STONE IVORY OUT | 60X60 |
| GST6900 | GENTLE STONE MUD OUT   | 60X60 |






|         |                        |       |
|---------|------------------------|-------|
| GST3100 | GENTLE STONE WHITE OUT | 30X60 |
| GST3200 | GENTLE STONE IVORY OUT | 30X60 |

### IMBALLI / PACKING / EMBALLAGE / VERPACKUNG

| FORMATO<br>SIZE<br>FORMAT<br>FORMAT | PZ./SCATOLA<br>PIECES/BOX<br>PIECES/BOÎTE<br>STÜCK/KARTON | MQ./SCATOLA<br>SQM/BOX<br>M <sup>2</sup> /BOÎTE<br>QM/KARTON | KG./SCATOLA<br>KG/BOX<br>KG/BOÎTE<br>KG/KARTON | SC./PALLET<br>BOXES/PALLET<br>BOÎTES/PALETTE<br>KARTONS/PALETTE | MQ./PALLET<br>SQM/PALLET<br>M <sup>2</sup> /PALLETTE<br>QM/PALLETTE | KG./PALLET<br>KG/PALLET<br>KG/PALLETTE<br>KG/PALLETTE | SPESSORE<br>THICKNESS<br>ÉPAISSEURS<br>STÄRKE |
|-------------------------------------|---|--|--|---|---|---|---|
| 59,5X119,2 / 23,4"X46,8" RETT.      | 2   | 1,440  | 31,00  | 36  | 51,84   | 1.131   | 10mm  |
| 60X60 / 24"X24"                     | 4   | 1,440  | 31,00  | 30  | 43,20   | 945   | 10mm  |
| 59,5X59,5 / 23,4"X23,4" RETT.       | 4   | 1,416  | 30,50  | 30  | 42,48   | 930   | 10mm  |
| 30X60 / 12"X24"                     | 6   | 1,080  | 23,30  | 40  | 43,20   | 947   | 10mm  |
| 29,6X59,5 / 11,8"X23,4" RETT.       | 5   | 0,900  | 19,30  | 48  | 43,20   | 941   | 10mm  |
| 9,7X59,5 / 3,8"X23,4" RETT.         | 12  | 0,700  | 15,20  | 60  | 42,00   | 927   | 10mm  |
| 35X37,5 / 13,8"X14,8" ESAGONA MIX   | 4   | -  | -  | -   | -   | -   | -   |
| 31X29 / 12,2"X11,4" MOSAIC LISCA    | 4   | -  | -  | -   | -   | -   | -   |
| 29,5X29,5 / 11,5"X11,5" MOSAICO     | 4   | -  | -  | -   | -   | -   | -   |
| 9X60 / 3,5"X24" BATT.               | 12  | -  | -  | -   | -   | -   | -   |
| 9X59,5 / 3,5"X23,4" BATT. RETT.     | 12  | -  | -  | -   | -   | -   | -   |
| 33X120 / 13"X47" C. RETTA RETT.     | 2   | -  | -  | -   | -   | -   | -   |
| 60X60 / 24"X24" OUT                 | 4   | 1,440  | 31,00  | 30  | 43,20   | 945   | 10mm  |
| 30X60 / 12"X24" OUT                 | 6   | 1,080  | 23,30  | 40  | 43,20   | 947   | 10mm  |



IN  
EN 14411 BI\_a GL

|   |   |   |   |   |   |   |  |   |   |   |   |
|---|---|---|---|---|---|---|--|---|---|---|---|
|  |  |  |  |  |  |  |  |  |  |  |  |
| Non gelive/Frost Proof<br>Ingelif/Frostsicher                                     | Totale/Complete<br>Totale/FAbsolut  | Resiste/Resists<br>Resiste/Bestading  | 40-55 N/mm <sup>2</sup>   | ≤ 0,4 %   | PEI V   | WET > 0,66<br>DRY > 0,54  | 8  | > 0,42  | R 10  | B   | V2  |

OUT  
EN 14411 BI\_a GL

|   |   |   |   |   |   |   |  |   |   |   |             |   |
|---|---|---|---|---|---|---|--|---|---|---|-------------|---|
|  |  |  |  |  |  |  |  |  |  |  | <b>ASTM</b> |  |
| Non gelive/Frost Proof<br>Ingelif/Frostsicher                                     | Totale/Complete<br>Totale/FAbsolut  | Resiste/Resists<br>Resiste/Bestading  | 40-55 N/mm <sup>2</sup>   | ≤ 0,4 %   | PEI IV  | WET > 0,97<br>DRY > 1,07  | 8  | > 0,42  | R 11  | C   | ≤ 0,60      | V2  |

I valori indicati nella tabella si riferiscono alle prove eseguite sul colore IVORY.  
 The values in the table refer to the tests performed on color IVORY.  
 Les valeurs indiquées dans le tableau se réfèrent aux essais exécutés sur le couleur IVORY.  
 Die in der Tabelle angegebenen Werte beziehen sich auf die Tests die auf dem Farbe IVORY ausgeführt wurden.  
 Los valores indicados en la tabla se refieren a las pruebas realizadas sobre el color IVORY.  
 Указанные в таблице значения относятся к испытаниям, проведенным на бежевом оттенке IVORY.







**SEDE LEGALE E OPERATIVA:**

41014 Solignano di Castelvetro (MO) Italy  
Via Croce, 80

PH. +39 059 77 84 11  
FAX +39 059 77 84 44/43

info@ascot.it  
ascot.it

